

**LEVELO**



**Levelo**

**AEROFLEX Portable  
Carbon Fiber Blender**

**SKU: LVL-AEROFX-BLNDR-STR**



# Table of Contents

Blender Operation	2
LED Indication	2
Specifications	3
Instructions	3
Blending Steps	5
Important Tips	6
Overview	6
Troubleshooting	7
Disposal	7
Warranty	8
Contact Us	8

## Blender Operation

Double-click to start, single-click to stop, and single-click to check the battery level.

## LED Indication

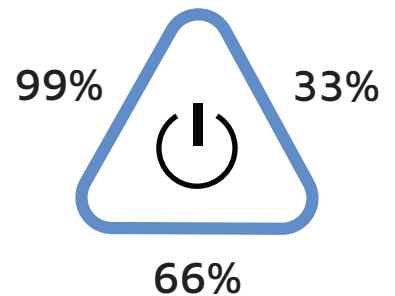
**1. Charging:** The blue light breathes according to the current battery level:

67%–99% power: 3 blue lights on

34%–66% power: 2 blue lights on

1%–33% power: 1 blue light on

Fully Charged: The blue light remains steadily on.



**2. Stall Protection:** The blue light flashes rapidly for 5 seconds.

**3. Smart Magnet Induction:** When a magnet is detected, the red and blue lights flash alternately for 2 seconds.

**4. Low Battery Protection:** Blue light turns off, red light turns on for 6 seconds, then the red light flashes for 5 seconds.

**5. Normal Operation:** The blue light stays on.

**6. Low Battery Warning (One Grid Remaining):** The blue light is off, and the red light flashes slowly. Double-click to start, single-click to stop, and single-click to check the battery level.

## Specifications

Battery Capacity	6000mAh
Motor Speed	20000-26000rpm
Type-C Input	5V/2A
Bottle Capacity	700ml
Blade Material	304 Stainless Steel
Smart Stop	Auto Shutoff After 30s Active Or 6s Idle Time
Material	ABS + Food Grade Tritan
Product Size	100 x 270mm
Weight	700g

## Instructions

- 1.** This machine operates on battery power to drive the motor. Various smart phone chargers are compatible with this product's charger. Before first use, please fully charge the machine using the provided cable. The estimated fast charging time is approximately 4 hours.
- 2.** While the machine is in operation, do not open the upper cover or insert your hands or any hard objects into the cup to prevent injury or damage.
- 3.** Before cleaning, ensure the power switch is turned off. Do not immerse the machine base in water, as this may damage the internal components.

- 4.** To start the machine, double-click the power button. The blue indicator light will illuminate. Each operation cycle lasts approximately 40 seconds, after which the machine will automatically stop.
- 5.** If the machine suddenly stops due to fruit residues or blockages, immediately switch off the device and initiate the protective cleaning procedure. Disinfect the affected parts using a microwave or hot water heated above 50°C to prevent distortion of accessories.
- 6.** Do not wash the accessories in a dishwasher or any other washing equipment.
- 7.** Avoid washing accessories with steel balls, abrasive materials, or corrosive cleaners.
- 8.** This product is designed exclusively for juice preparation and is not suitable for stirring meat, nuts, beans, or similar substances.
- 9.** Keep this product out of reach of children. Do not allow disabled or mentally impaired individuals to operate or play with this product.

Before use, pour some pure water into the cup and turn on the machine to wash the cup.

Cut the fruit into small pieces approximately 1.5cm by 1.5cm. Place the fruit pieces into the cup, then add some milk or water. Turn the machine upside down and switch it on. As soon as the stirring core begins to operate, turn the machine back upright and start making juice.

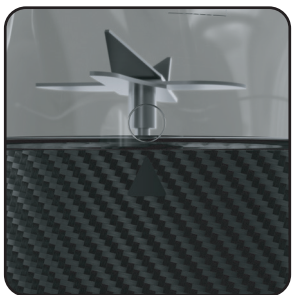
If the fruit pieces are too large to be stirred effectively, please restart the machine. You may also shake the machine while it is stirring to help make the juice smoother.

Before preparing another batch of juice, clean the cup by adding pure water and turning on the machine to wash the cup.

## Blending Steps

Before use, please ensure the battery is fully charged and all accessories are clean. This product features double safety protection and will only operate when the cup is securely placed onto the base.

1. Align the arrow on the cup with the dot on the base before use.
2. Fill the cup with cut fruits up to 20% of its capacity. For best results, keep the fruit pieces around 1.5 x 1.5 cm to prevent jamming.
3. Securely tighten the cover, ensuring the arrow aligns with the switch.
4. Turn the cup upside down or tilt it to separate the fruit from the blade. Press the switch to start the blender, then return the cup to its upright position.
5. Once upright, gently shake the cup left and right to enhance juice extraction.
6. After approximately 40 seconds, your delicious juice will be ready to enjoy.
7. For optimal results, add 60% water first. When squeezing smoothies, maintain a 1:1 ratio of ice to water.



1



2



3



4



5



6



7

## Important Tips

1. Please ensure the battery is fully charged before each use.
2. Press the button to display the remaining battery level.
3. If the device is stored for an extended period, charge it fully before storage.
4. Insufficient battery storage for over one month may cause damage due to battery exhaustion.
5. When fully charged, the battery can last up to 6 months. Please recharge regularly if the device is stored for a long duration.

## Overview



## Troubleshooting

Problem	Possible Cause	Solution
Device won't start or the red light flashes slowly.	Low battery	Charge the product.
Leakage detected.	The cup body is not tightened properly	Check whether the cup body is reversed. Ensure that the cup body is tightened. The arrow on the cup body should be aligned with the center of the dot.
Close the cup and the blue lights will flash for 2 seconds.	The arrow on the cup body is not aligned with the center	Tighten the cup. Remove the large fruit. Restart the machine.

## Disposal

This product must not be disposed of as unsorted household waste. It is important to separate such waste for proper treatment and recycling, in compliance with local waste management regulations.



## **Warranty**

Products procured directly from the **Levelo** website or physical store comes with a 24-month warranty. **Levelo** products purchased from any of our authorized dealers are guaranteed with a one-year warranty. If you wish to extend this warranty, you'll need to go to our website at **<https://www.levelobrand.com/warranty>** and fill out the necessary form, making sure to include your personal information and a photo of the product. After your request has been evaluated and accepted, we'll send you an email notification to affirm the extension of your product's warranty.

For more info, please check:

**<https://www.levelobrand.com/warranty>**

## **Contact Us**

If you have any questions about this Privacy Policy, please contact us at: **[Info@levelobrand.com](mailto:Info@levelobrand.com)**

Website: **<https://www.levelobrand.com/>**

Email: **[Info@levelobrand.com](mailto:Info@levelobrand.com)**

Instagram: **levelobrand**

Facebook: **levelobrand**